

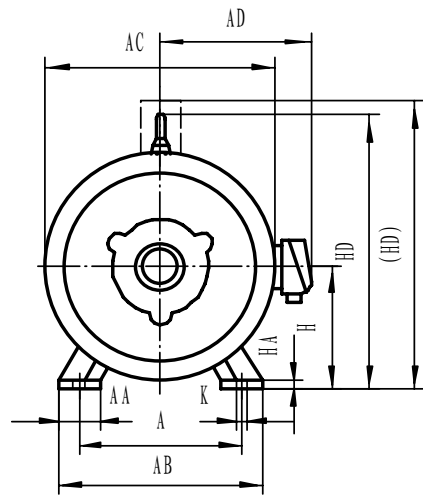
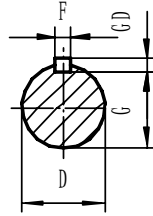
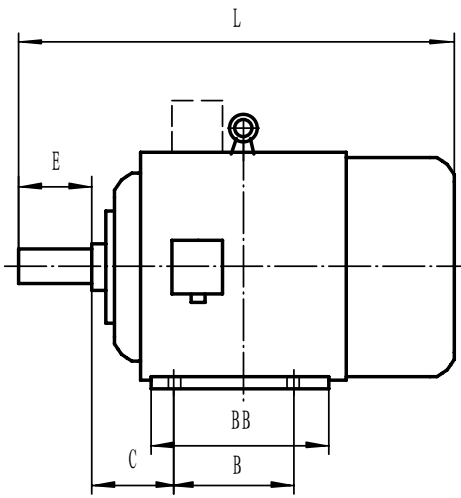
## Y Series (IP44)

### Main Specification & Technical Data

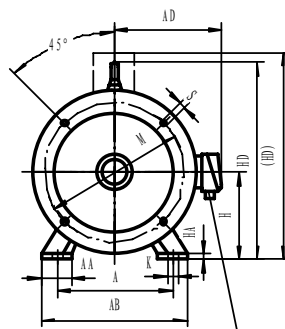
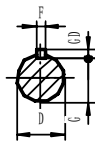
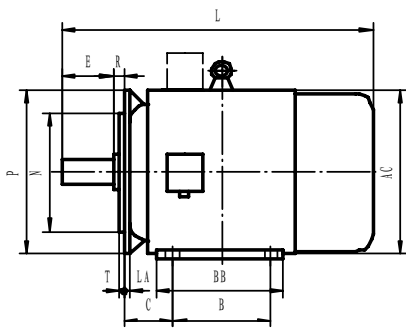
Type	Full Load					Stall Current Rated Current	Stall Torque Rated Torque	Max. Torque Rated Torque	Min. Torque Rated Torque	(B3) Net Weight (Kg)
	Rated Power (kW)	Speed (r/min)	Current (A)	Eff. (%)	Power Factor (cosΦ)					
Y80M1-2	0.75	2830	1.8	75.0	0.84	6.5	2.2	2.3	1.5	16
Y80M2-2	1.1		2.5	77.0	0.86					17
Y90S-2	1.5	2840	3.4	78.0	0.85	7.0	2.0	2.3	1.4	22
Y90L-2	2.2		4.8	80.5	0.86					25
Y100L-2	3	2860	6.4	82.0	0.87	7.0	2.0	2.3	1.4	32
Y112M-2	4	2880	8.2	85.5						41
Y132S1-2	5.5	2900	11.1		86.2	0.88	7.0	2.0	2.3	1.2
Y132S2-2	7.5		15.0	86.2						
Y160M1-2	11	2930	21.8	87.2	0.88	7.0	2.0	2.3	1.2	120
Y160M2-2	15		29.4	88.2						130
Y160L-2	18.5	2940	35.5	89.0	0.89	7.0	2.0	2.3	1.1	150
Y180M-2	22		42.2							89.0
Y200L1-2	30	2950	56.9	90.0	0.89	7.0	2.0	2.3	1.1	225
Y200L2-2	37		69.8	90.5						250
Y225M-2	45	2980	83.9	91.5	0.89	7.0	2.0	2.3	1.0	320
Y250M-2	55		103							91.5
Y280S-2	75	2980	140	92	0.89	7.0	2.0	2.3	0.9	540
Y280M-2	90		166	92.5						565
Y315S-2	110	2980	203	93.0	0.89	6.8	1.8	2.2	0.9	880
Y315M-2	132		242							93.0
Y315L1-2	160	2980	292	93.5	0.89	6.8	1.8	2.2	0.8	1100
(Y315L-2)	(185)		338							93.5
Y315L2-2	200	2980	365	94.2	0.90	6.9	1.2	2.2	0.71	1750
Y355M1-2	220		399							94.2
Y355M2-2	250	2980	447	94.5	0.90	7.0	1.2	2.2	0.71	1750
Y355L1-2	280		499	94.7						1750
Y355L2-2	315	2980	560	95.0	0.90	7.1	1.2	2.2	0.71	1750
Y80M1-4	0.55		1390	1.51						73.0
Y80M2-4	0.75	2.01		74.5	17					
Y90S-4	1.1	1390	2.70	78.0	0.78	6.5	2.3	2.3	1.6	21
Y90L-4	1.5		3.70	79.0						25
Y100L1-4	2.2	1410	5.0	81.0	0.82	7.0	2.2	2.3	1.5	32
Y100L2-4	3		6.8	82.5						35
Y112M-4	4	1440	8.8	84.5	0.82	7.0	2.2	2.3	1.5	43
Y132S-4	5.5		11.6	85.5						61
Y132M-4	7.5	1440	15.4	87.0	0.85	7.0	2.2	2.3	1.4	75
Y160M-4	11		22.6	88.0						125
Y160L-4	15	1460	30.3	88.5	0.85	7.0	2.2	2.3	1.4	145

Type	Full Load					Stall <u>Current</u> Rated Current	Stall <u>Torque</u> Rated Torque	Max. <u>Torque</u> Rated Torque	Min. <u>Torque</u> Rated Torque	(B3) Net Weight Kg
	Power (kW)	Speed (r/min)	Current (A)	Eff. (%)	Power Factor (cosΦ)					
Y180M-4	18.5	1470	35.9	91	0.86	7.0	2.0	1.2	170	
Y180L-4	22		42.5	91.5						
Y200L-4	30		56.8	92.2	0.87					
Y225S-4	37	1480	70.4	91.8			0.88	1.9	1.1	310
Y225M-4	45		84.2	92.3						
Y250M-4	55		103	92.6	0.89		2.0	1.0	405	
Y280S-4	75		140	92.7						
Y280M-4	90		164	93.5		6.8				1.9
Y315S-4	110	201								
Y315M-4	132	240	94.0	1.8	1.0		880			
Y315L1-4	160	289	94.5					1140		
(Y315L-4)	(185)	334		0.9	1250					
Y315L2-4	200	361								
Y355M1-4	220	1490	407	94.4	0.87	1.4	0.83	1570		
Y355M2-4	250		461	94.7						
Y355L1-4	280		515	94.9						
Y355L2-4	315		578	95.2					6.9	0.71
Y90S-6	0.75		910	2.3	72.5				0.70	
Y90L-6	1.1	3.2		73.5	0.72					
Y100L-6	1.5	920	4.0	77.5	0.74	6.0	2.2	31		
Y112M-6	2.2	940	5.6	80.5						
Y132S-6	3	960	7.2	83.0	0.76	6.5	2.0	1.3	54	
Y132M1-6	4		9.4	84.0						0.77
Y132M2-6	5.5		12.6	85.3						
Y160M-6	7.5	970	17.0	86.0	0.78		1.8	2.0	1.2	120
Y160L-6	11		24.6	87.0						
Y180L-6	15		31.4	89.5	0.81					
Y200L1-6	18.5		37.7	89.8	0.83					
Y200L2-6	22		44.6	90.2		0.85				
Y225M-6	30	59.5	90.8		0.86		1.8	1.1	295	
Y250M-6	37	72	90.8							
Y280S-6	45	85.4	92.0	0.87	1.8	1.1	500			
Y280M-6	55	104								
Y315S-6	75	990	141	92.8	0.87	1.6	1.0	810		
Y315M-6	90		168	93.2						
Y315L1-6	110		205	93.5						
Y315L2-6	132		246	93.8						

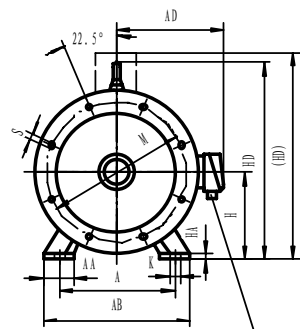
Type	Full Load					Stall Current Rated Current	Stall Torque Rated Torque	Max. Torque Rated Torque	Min Torque Rated Torque	(B3) Net Weight (Kg)	
	Power (kW)	Speed (r/min)	Current (A)	Eff. (%)	Power Factor (cosΦ)						
Y355M1-6	160	980	300	94.1	0.86	6.7	1.3	2.0	0.83	1520	
Y355M2-6	185		347	94.3						1630	
Y355M3-6	200		375							1630	
Y355L1-6	220		411	94.5						1800	
Y355L2-6	250		466	94.7						1880	
Y132S-8	2.2	710	5.8	80.5	0.71	5.5	2.0	2.0	1.2	55	
Y132M-8	3		7.7	82						0.72	65
Y160M1-8	4	720	9.9	84	0.73	6	2.0	2.0	1.1	110	
Y160M2-8	5.5		13.3	85						0.74	120
Y160L-8	7.5		17.7	86						0.75	145
Y180L-8	11	730	24.8	87.5	0.77	6.0	2.0	2.0	1.1	180	
Y200L-8	15		34.1	88.0						0.76	220
Y225S-8	18.5		41.3	89.5						0.78	255
Y225M-8	22		47.6	90.0						0.80	285
Y250M-8	30	740	63.0	90.5	0.80	6.5	1.6	2.0	1.0	390	
Y280S-8	37		78.2	91.0						0.79	500
Y280M-8	45		93.2	91.7						0.82	580
Y315S-8	55		114	92.0						0.81	790
Y315M-8	75		152	92.5						0.82	970
Y315L1-8	90		179	93.0						0.82	1060
Y315L2-8	110	219	93.3	0.81	1170						
Y355M1-8	132	730	264	93.8	0.81	6.3	1.3	2.0	0.83	1560	
Y355M2-8	160		319	94.0						1650	
Y355L1-8	185		368	94.2						1830	
Y355L2-8	200		398	94.3						1946	
(Y355L3-8)	(220)		438							1985	
(Y355L4-8)	(250)		498							2060	
Y315S-10	45	590	101	91.5	0.74	6.0	1.4	2.0	0.8	810	
Y315M-10	55		123	92.0						960	
Y315L2-10	75		164	92.5						0.75	1140
Y355M1-10	90		191	93.0						0.77	1530
Y355M2-10	110		230	93.2	0.78	1.2	0.71	1650			
Y355L1-10	132		275	93.5				1830			
(Y355L2-10)	(160)		333					2010			
(Y355L3-10)	(185)		385					2010			



IMB3



“THR” 连接电源的螺纹直径  
 “THR” thread dia of the  
 Connection cable pipe

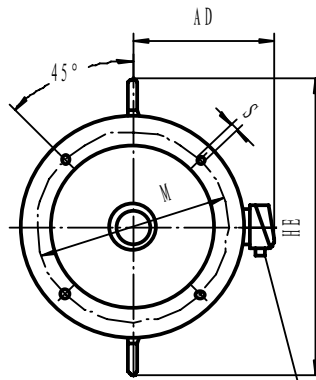
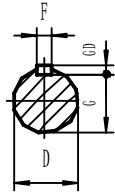
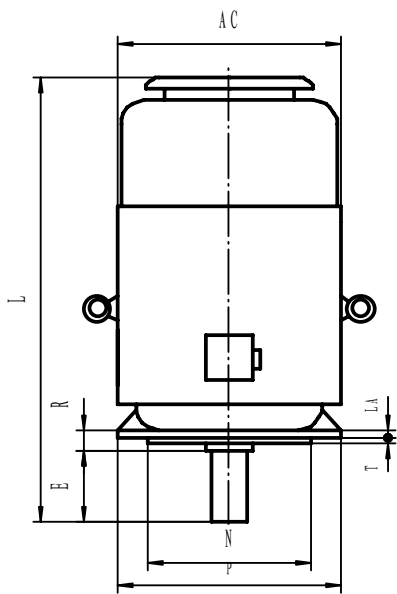


“THR” 连接电源的螺纹直径  
 “THR” thread dia of the  
 Connection cable pipe

IMB35

Y80 - Y200

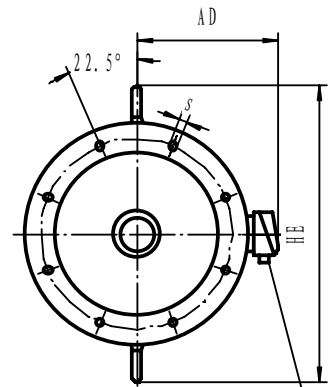
Y225 - Y355



“THR” 连接电源的螺纹直径  
“THR” thread dia of the  
Connection cable pipe

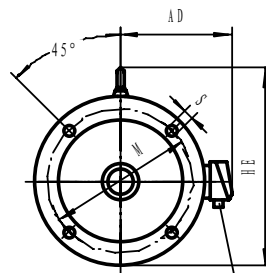
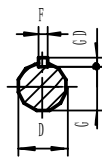
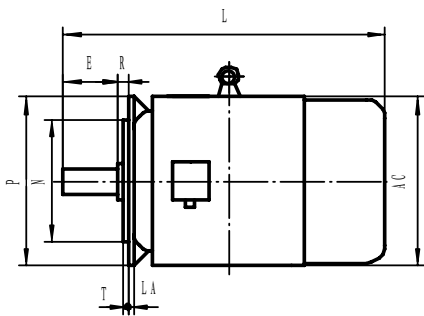
IMV1

Y180 ~ Y200



“THR” 连接电源的螺纹直径  
“THR” thread dia of the  
Connection cable pipe

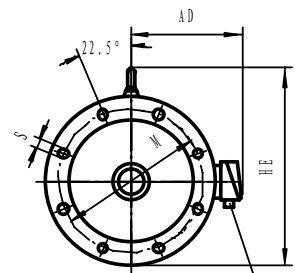
Y225 ~ Y355



“THR” 连接电源的螺纹直径  
“THR” thread dia of the  
Connection cable pipe

IMB5

Y80 ~ Y200



“THR” 连接电源的螺纹直径  
“THR” thread dia of the  
Connection cable pipe

Y225 ~ Y355

## Mounting Type IMB3

Frame with feet, endshield without flange of motor (H80 ~ 160 include B6, B7, B8, V5, V6)

Frame No.	Poles No.	Dimensions (mm)																	
		A	B	C	D	E	F×GD	G	H	K	AB	AC	AD	AA	BB	HA	HD	L	THR
80M	2.4	125	100	50	19	40	6×6	15.5	80	10	165	175	150	36	130	10	175	290	M24×1.5 -6H
90S	2.4.6	140		56	24	50	8×7	20	90		180	195	160	37	135	13	195	315	
90L		125	63	28	60	24		100	205	215	180	42	180	15	245				
100L		160				140	70	89	38	80	10×8	33	132	12	245	240	190	52	185
112M	190	216	178	108	42		110				12×8	37	160		15	280	335	265	63
132S	2.4.6.8	254	210			121		48	14×9	42.5				180		19	330	335	265
132M			254	121	48		14×9				42.5	180	19		330				
160M		279	241			16×10		49	200	395				420		315	70	379	25
160L			279	190	149		55				140	18×11	53		225				
180M		318	305			133		55	140	18×11				53		225	19	435	475
180L	318		305	133	55		140				18×11	53	225		19				
200L	4.8	356	286			149		55	110	16×10				49		250	24	490	515
225S			2	311	65		140				18×11	58	250		24				
225M	4.6.8	311	65	140		18×11		58	250	24				490		515	385	80	455
250M	2	406			349		168				65	140	18×11		58				
280S	4.6.8		457	368		190		75	140	20×12				67.5		280	24	550	580
280M	2	457			419		190				75	140	20×12		67.5				
280M	4.6.8.10		457	419		190		75	140	20×12				67.5		280	24	550	580
315S	2	508			406		216				65	170	22×14		71				
315S	4.6.8.10		508	406		216		65	170	22×14				71		315	28	744	645
315M	2	508			457		216				65	140	18×11		58				
315M	4.6.8.10		508	457		216		65	170	22×14				71		315	28	744	645
315L	2	508			457		216				65	140	18×11		58				
315L	4.6.8.10		508	457		216		65	170	22×14				71		315	28	744	645
355M	2	610			560		254				75	140	20×12		67.5				
355M	4.6.8.10		610	560		254		75	170	25×14				86		355	28	740	750
355L	2	610			630		254				75	140	20×12		67.5				
355L	4.6.8.10		610	630		254		75	170	25×14				86		355	28	740	750



## Mounting Type IMV1

### Frame without feet, endshield with flange & shaft extension downward of motor

Frame No.	Poles No.	Dimensions (mm)															THR
		D	E	M	N	F×GD	G	P	R	S	T	AC	AD	HE	LA	L	
180M 180L	2.4.6.8	48	110	300	250	14×9	42.5	350	0	4-Φ19	5	360	285	500	18	730 770	M36×2 -6H
200L	2.4.6.8	55	110	350	300	16×10	49	400	0	4-Φ19	5	400	310	550	18	850	M48×2 -6H
225S	4.8	60	140	400	350	18×11	53	450	0	8-Φ19	5	450	345	610	20	910	
225M	2	55	110			16×10	49									905	
	4.6.8	60	140			18×11	53									935	
250M	2	60	140	500	450	18×11	53	550	0	8-Φ19	5	500	385	650	22	1035	M64×2 -6H
	4.6.8	65					58									550	
280S	2	65	140	500	450	18×11	58	550	0	8-Φ19	5	550	410	720	20	1120	
	4.6.8	75					20×12									67.5	
280M	2	65					18×11									58	
	4.6.8.10	75	20×12	67.5	1170												
315S	2	65	140	600	550	18×11	58	660	0	8-Φ24	5	640	550	900	24	1310	
	4.6.8.10	80					22×14									71	
315M	2	65					18×11									58	
	4.6.8.10	80	22×14	71	1390												
315L	2	65	18×11	58	1430												
	4.6.8.10	80	22×14	71	1460												
355M	2	75	140	740	680	20×12	67.5	800	0	8-Φ24	5	750	680	(1035)	28	1645	
	4.6.8.10	95					25×14									86	1675
355L	2	75					20×12									67.5	1645
	4.6.8.10	95	25×14	86	1675												

## Mounting Type IMB5

Frame without feet, endshield with flange of motor (H80 ~ 160 include V1, V3)

Frame No.	Poles No.	Dimensions (mm)																											
		D	E	M	N	F×GD	G	P	R	S	T	AC	AD	HE	LA	L	THR												
80M	2.4	19	40	165	130	66	15.5	200	0	4-12	3.5	175	150	185	12	290	M24×1.5-6H												
90S	2.4.6	24	50	165	130	87	20	200	0		3.5	195	160	195	12.5	310													
90L	2.4.6										3.5	195	160	195		335													
100L	2.4.6	28	60	215	180					87	24	250	0	4-15	4	205	180		245	14	380	M30×2-6H							
112M	2.4.6					230	190	265	400																				
132S	2.4.6.8					38	80	265	230							108	33	300	0		4-19		5	275	210	315	16	475	
132M	2.4.6.8																							275	210	315		515	
160M	2.4.6.8					42	110	300	250							128	37	350	0		4-19		5	325	255	385	16	600	M36×2-6H
160L		645																											
180M	2.4.6.8	48	110	300	250	14×9	42.5	350	0	4-Φ19	5	360	285	430	18	670													
180L																710													
200L	2.4.6.8	55	110	350	300	16×10	49	400	0	4-Φ19	5	400	310	480	18	775	M48×2-6H												
225S	4.8	60	140	400	350	18×11	53	450	0	8-Φ19	5	450	345	535	22	825													
225M	2	55	110			16×10	49								20	815													
	4.6.8	60	140			18×11	53								845														